



W⁺ WorkfloPlus

DEVELOPED BY  INTOWARE

WorkfloPlus Integration with ERP Tools

 INTOWARE

Introduction

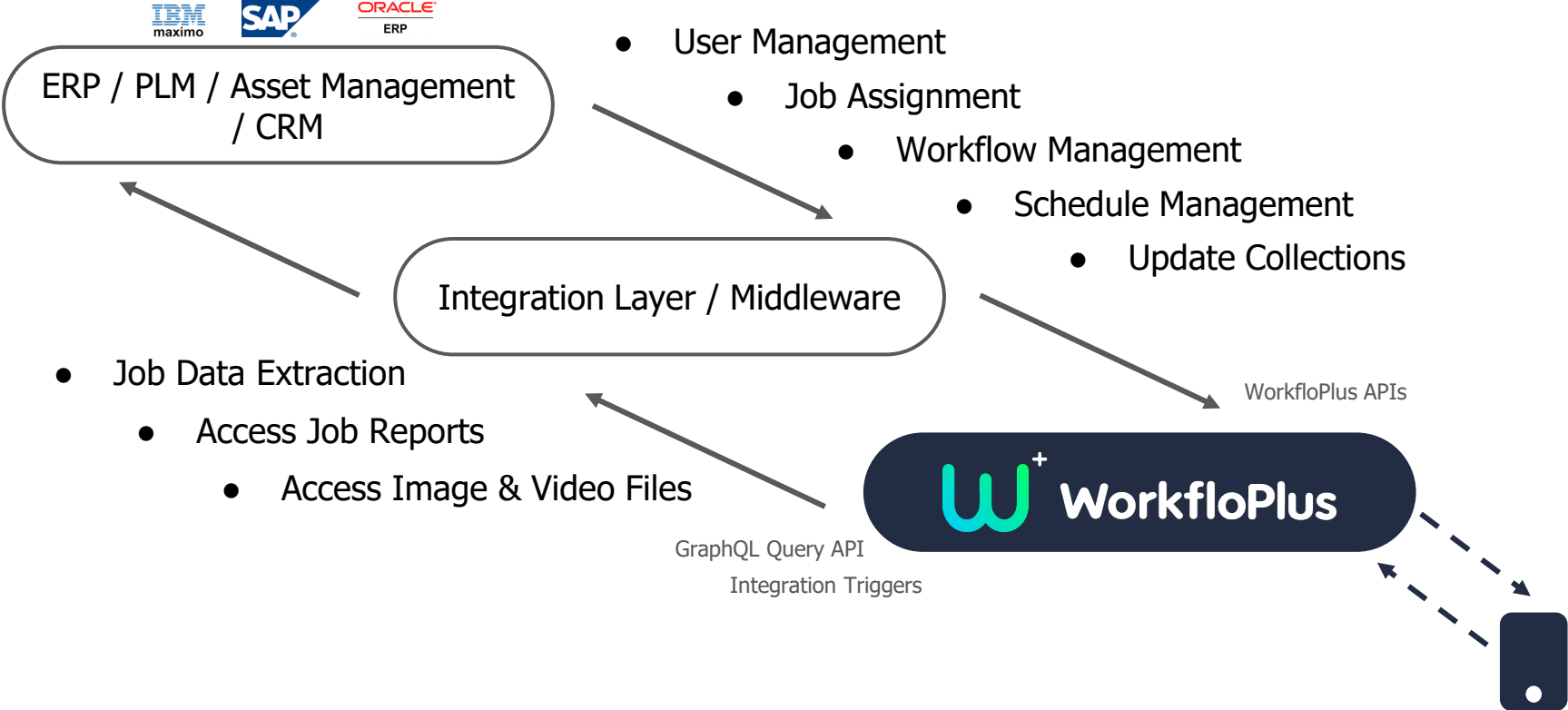
WorkfloPlus has been created using Open APIs to allow for integration to 3rd party tools

These Open APIs may be leveraged to allow users to drive WorkfloPlus from their ERP / PLM / CRM / Asset Management solutions

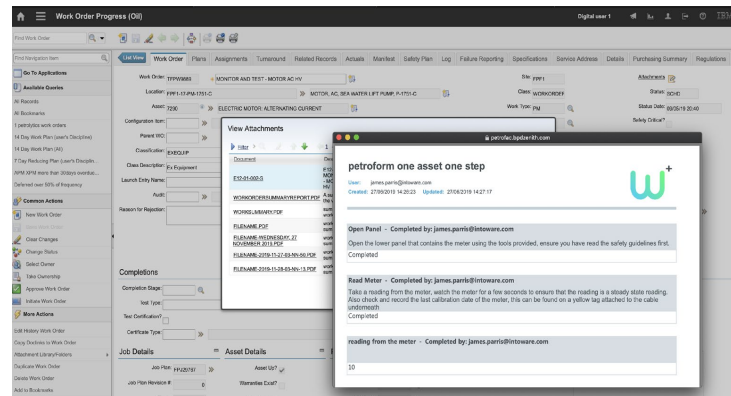
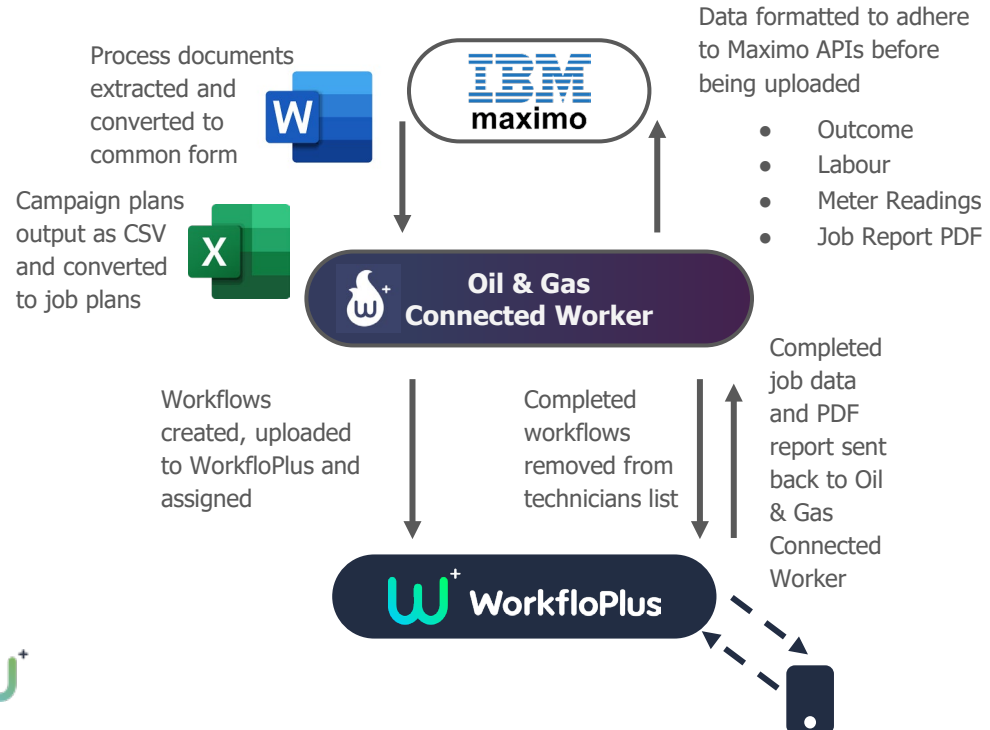
A common approach for integrating software solutions is to utilise a custom-created integration layer or middleware application that includes the following*¹

- Knowledge of APIs for both solutions (both in terms of how to send data to each solution and the data format expected from each solution)
- Authentication (both the authentication approach*² used by each solution along with credentials for each solution)
- Business Logic (optional - can include additional business logic to determine the interaction between solutions*³)
- Integration Logging (optional - can store data sent back and forth in order monitor performance and route-cause any issues)
- Front-End (optional - can include a front-end for data visualisation or user enabled manual actions)

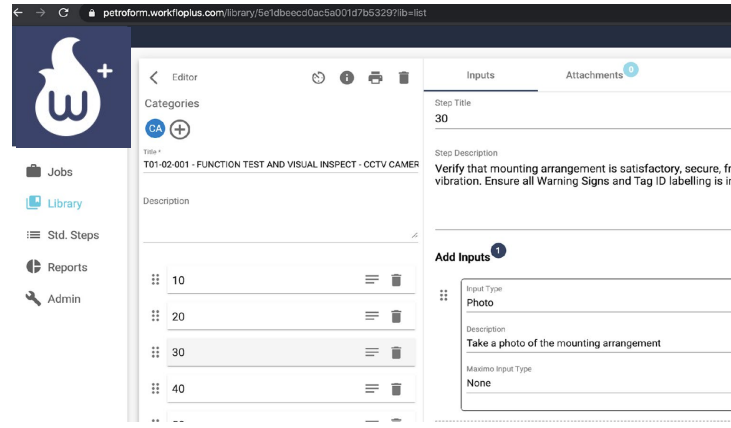
Common Integration Activities



Example: Oil & Gas Connected Worker



Viewing a WorkfloPlus Report in Maximo after it has been auto-uploaded

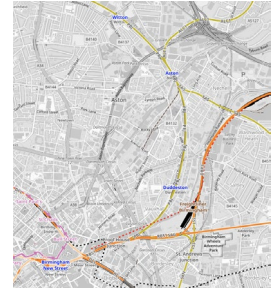


Viewing a process after it has been converted from a word document, steps types inferred using NLP

Example: Rail Track Inspection



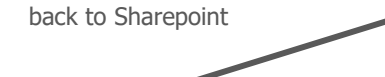
Track ID	Track Name	Inspection Date	Status
101	101	2021-01-01	Completed
102	102	2021-01-02	In Progress
103	103	2021-01-03	Not Started



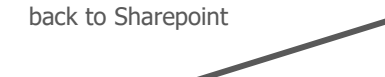
Project Data read from Sharepoint into WorkfloPlus



Project status updates written back to Sharepoint



Custom report PDFs written back to Sharepoint. Individual reports combined into a full project report PDF once all parts are completed



Track Position Reference

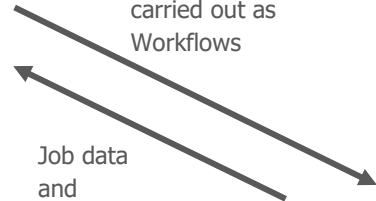


Track Locator App

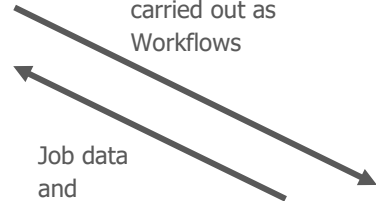
Geo Location Data



Track inspections carried out as Workflows



Job data and reports extracted



Existing report format replicated using WorkfloPlus Custom Reporting feature (HTML and CSS defined template).

Geo location converted to reference to track location



Working Together

Whether the integration layer is created by your own people, by a 3rd party systems integrator or by Intoware - a successful integration always requires clear and open communication between all parties. We are happy to support your integrations via direct knowledge transfer and via our API documentation

#weareopen





#weareintoware